

A large, multi-masted wooden sailing ship with vibrant blue sails is sailing on a deep blue sea under a clear sky. The ship has a dark blue hull and a wooden superstructure. A white rectangular box is superimposed over the center of the image, containing the text.

# *Moana Cruising*

L I V E A B O A R D

Komodo - Indonesia





\*\*\*\*\*

---

**Awesome Trip!**  
**Great crew, food**  
**and dive guides.**

---

Christine, United States



# Welcome to Moana Cruising

Moana Cruising offers liveaboard holidays within the spectacular Komodo National Park of Indonesia.

Throughout your holiday, we will take you on a journey that offers breathtaking scenery, pristine coral reefs and stunning tropical beaches.

Whether you are traveling solo or as a group, Moana and her team are equipped to ensure you have the best holiday possible.

This booking & travel guide is for you to ensure that you have all the necessary information to book your space aboard Moana and afterwards to prepare yourself for a smooth and relaxed travel experience.

In case you have any questions please remember we are only one phone call or email away.

Now dive into the world of Moana Cruising and experience the holiday of a lifetime



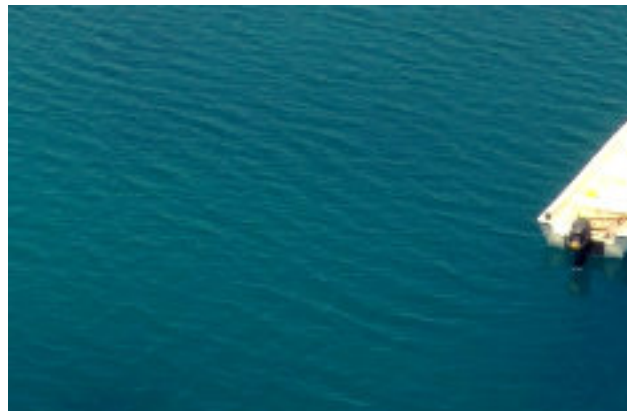
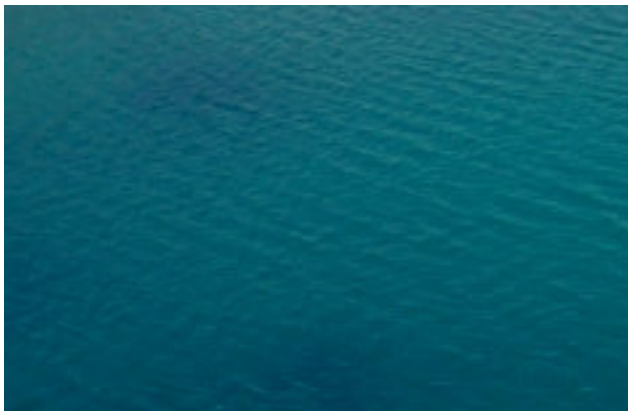
# Booking & Travel Guide

|                           |    |
|---------------------------|----|
| Liveaboard Experience     | 6  |
| About Moana               | 7  |
| Diving                    | 9  |
| Liveaboard Activities     | 11 |
| Services                  | 12 |
| Prices                    | 13 |
| A Typical Day             | 15 |
| Sample Itinerary          | 17 |
| Cabins                    | 20 |
| Equipment Rental          | 22 |
| How To Book               | 23 |
| Komodo                    | 24 |
| Dive Sites                | 25 |
| Climate                   | 29 |
| Private Charter           | 30 |
| Komodo National Park      | 31 |
| What To Bring             | 32 |
| Medical Info              | 34 |
| Visa & Travel Information | 35 |
| Getting To & From Moana   | 36 |
| Flight Information        | 38 |
| Additional Services       | 39 |
| Payments                  | 40 |
| sharc Profile             | 41 |
| Cancellation Policy       | 42 |
| Terms & Condition         | 44 |





Experienced local  
Divemasters  
European Cruise Director





## Liveaboard Experience

Moana is a traditional Indonesian liveaboard offering all the modern facilities as well as home comforts.

Cruise with Moana and experience the wonder and beauty of Komodo, a UNESCO World Heritage Site.

Dive with mantas and sharks, marvel at the underwater sea life unique to this region and explore vibrant reefs.

With Moana Cruising, you will experience one of the most biodiverse regions on earth.

# About Moana

## TRADITIONAL PHINISI

The classical beauty of the wooden sailing boat combines traditional atmosphere with all modern conveniences and safety features. The most impressive fleet of wooden sailing vessels are the so-called Bugis prahus of Indonesia, commonly known as Pinisi Schooner.

These antique looking sailing boats have been built for centuries on isolated beaches by local people, following oral traditions, without any drawings and plans. The construction of the boat is accompanied by unique rituals and ceremonies.

Ironwood is preferred for boat structures. Obtained from the low land forests of Sulawesi, Kalimantan and Irian Jaya, Ironwood is locally called „Kayu Besi“. Although quite heavy, it has excellent physical properties and is not vulnerable to termites or other tropical wood eating insects or fungus.

## OUR CREW

We have a strongly dedicated crew aiming to make your stay as pleasant as possible.

Our experienced captain, mechanics and speed boat drivers ensure a smooth journey. An excellent dive master as well as a guide provide pleasant and spectacular dives. Our great chef and our friendly crew will cater for your needs aboard, starting with a cup of coffee or tea in the morning, serve tasty food during the day and take care of you all day long.

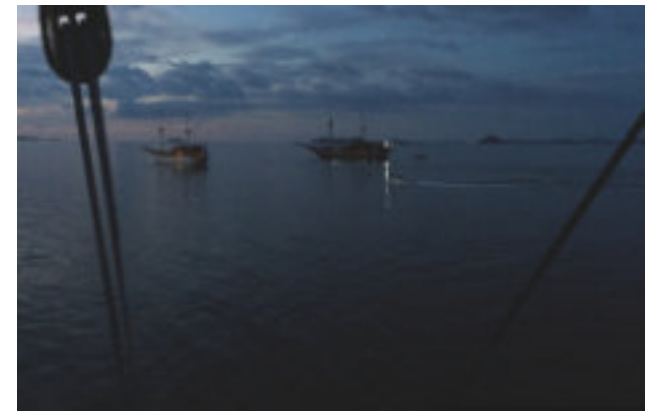
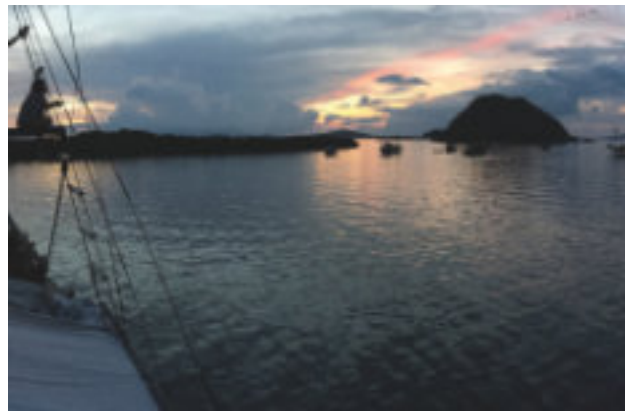
They all come from various Indonesian islands and have been with us for some time.

## ABOARD MOANA

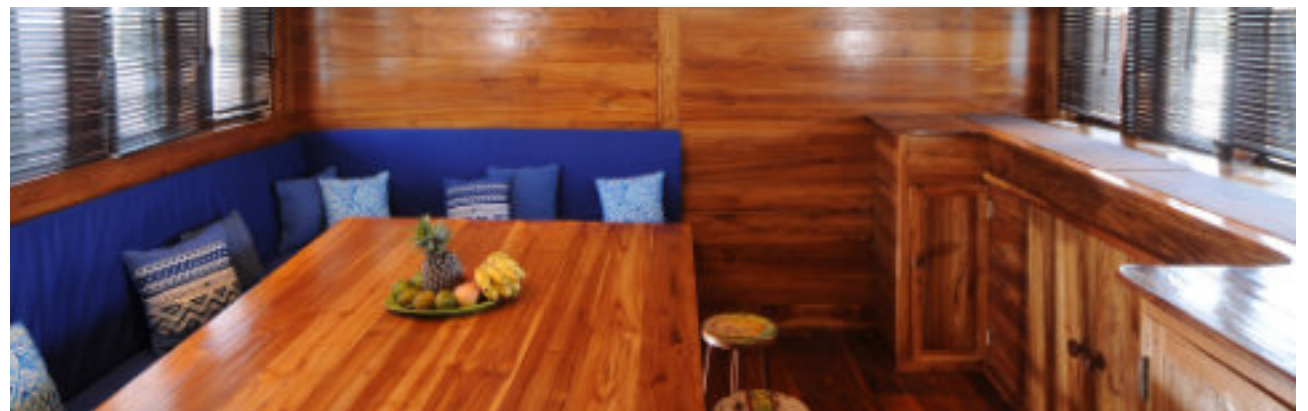
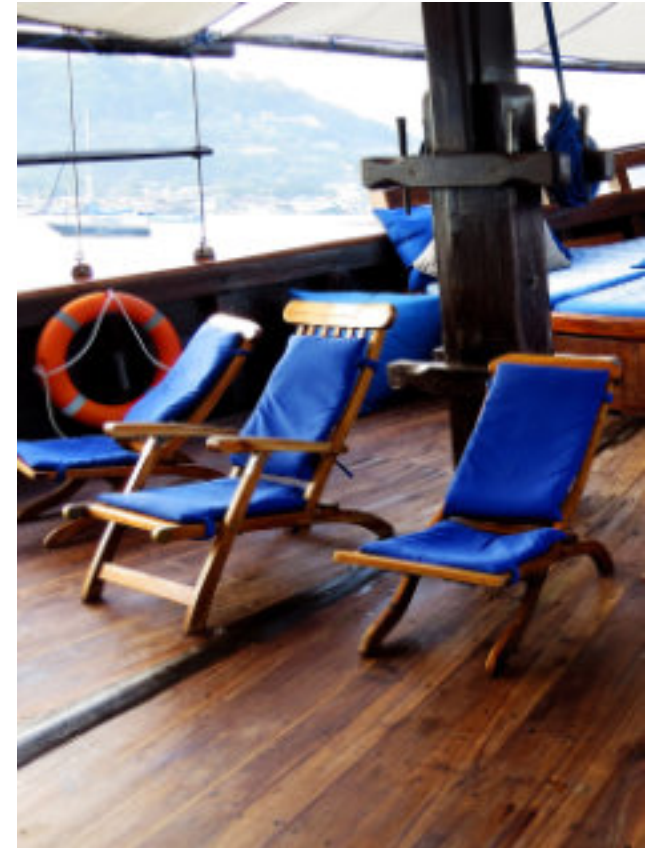
Moana caters for a maximum of 10 guests. Unless you charter Moana privately there are other guests aboard Moana during your trip.

Most of our guests come from Europe, USA or Australia with an average age between 30–60. Sometimes we do have families with us as well. Predominantly we speak English and German aboard. All our guests are easy to talk to, friendly, open-minded and we always have a great relaxed atmosphere sharing travel stories and the occasional drink at the end of the day.

Regarding the dives, normally, we dive in two groups of 4–5 divers per guide and either group by experience or put the photographers together. Before each dive, we provide informative and fun dive briefings







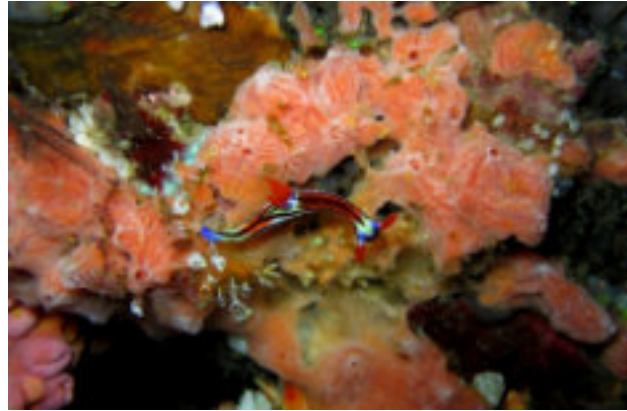


A full-page underwater photograph with a deep blue color palette. In the upper left, a bright sunburst from the surface illuminates the water. In the upper center, a cluster of bubbles rises towards the surface. The lower two-thirds of the image are filled with a massive, dense school of small, dark fish, likely sardines or anchovies, swimming in a coordinated pattern. The background shows the faint outlines of a coral reef structure.

## Diving

Komodo offers truly world class diving for all levels of experience. Fly over stunning reefs and feel the excitement of a drift dive. Watch the magnificent mantas glide over you. See sharks patrolling the reefs. Dig in a muck dive and discover the elusive and rare.



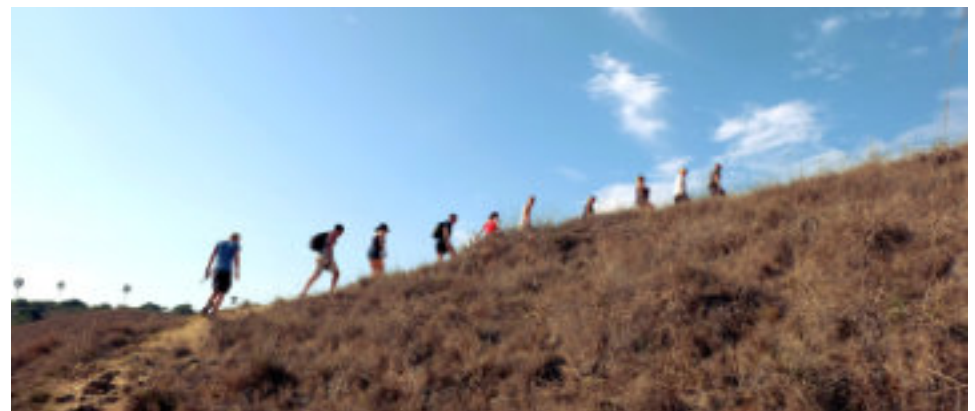
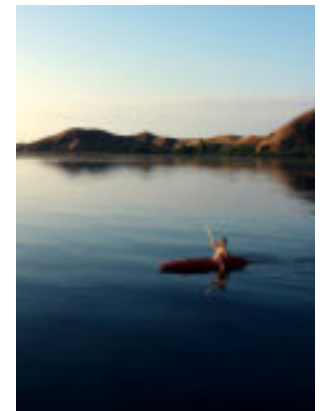
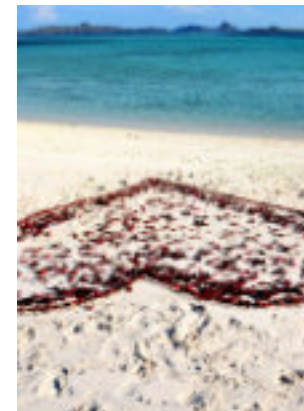
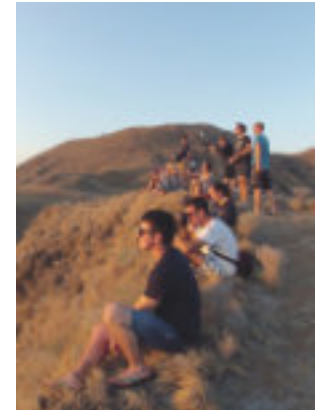




# Activities

Enjoy the best that Komodo and Moana has to offer, both above and below water. Take a dip in the crystal clear water, read a book on deck, enjoy great food, visit the native Komodo dragons in their natural habitat, witness breathtaking sunsets, feel the sea breeze, jump the mast, sip on a cool drink, lap up the warmth of the sun on a white sandy beach, sense the sand between your toes... enjoy!

This is your Moana holiday.





# Services

## ACCOMMODATION

- Air-conditioned cabins
  - Double or twin-share
  - Private shower, water flushed toilet and Towels
- Full board – our chefs cook a variety of Asian & International food. We do have vegetarian choices available



Light breakfast  
Cornflakes, rolled oats, fruits, tea & coffee



Warm breakfast  
Eggs, sausages, bacon, nasi / mie goreng, bread



Served two-course lunch  
Salads, fish & chicken dishes, smoothies / fruits



Afternoon snacks  
Diverse style of typical Indonesian Snacks



Served three-course dinner  
Soups, fish & meat dishes, desert



Beverages  
Water, Tea, Coffee and selected soft drinks

## FACILITIES

- Fresh hot water shower on deck
- Plenty of space to relax with lots of shade or to sunbath on the sundeck
- Outdoor sleeping under the stars
- Excellent sound- & light systems
- Library with fish ID books
- Safety Features
  - Full first aid box
  - Emergency oxygen and radio
  - well trained staff
  - Life vests
  - 2x life rafts
- European Cruise Director
- Return transfer to / from the ship to the airport or hotel

## ACTIVITIES

- Diving
  - Dive Guide
  - Tanks
  - Weights
  - Belt
- Land Excursions
  - Komodo Tragon Trail
  - Beach visits



## Prices 2024/25

DIVING GUEST

**1995 €**

5 nights trip / person

CRUISING GUEST

**1695 €**

5 nights trip / person

ALL GUESTS

**140 €** (150€ in 2025)

Komodo National Park & Harbor Fee

(subject to park authorities; March 2023)

Scheduled Trips with more or less nights are based on 399 € or 339 € per night and person.

Mandatory Park & Harbor Fee is based on 28 € per night and person. (30€ in 2025)

Private Full Charter is based on 3.990 € / night for the full boat.

## Prices 2024/25

### DIVING GUEST ALL DIVES INCLUDED

TYPICAL DIVES ON A 5  
NIGHTS TRIP

|         |           |
|---------|-----------|
| DAY 1   | 1-2       |
| DAY 2-4 | 4 EACH    |
| DAY 5   | 1-2       |
| DAY 6   | CHECK OUT |

### CRUISING GUEST DIVES À LA CARTE

WITH  
OWN EQUIPMENT

40 €

WITH  
RENTAL EQUIPMENT

55 €

#### OPTIONAL ADDONS

- Domestic Flights ~230 € / person
- Single Cabin 230€ / night surcharge
- Alcoholic beverages Beer, Wine, Spirits available
- Crew tips 30 € / night suggested
- Special soft drinks Tonic, sparkling water, diet coke
- Accommodation before / after the trip
- Rental Equipment 225 € / full set
- Diving Insurance from 40 Euro / 10 days
- Individual equipment Items (per trip)
  - 60 € each / BCD, Reg, Wetsuit, Dive Computer
  - 25 € each / Dive Light

#### PRIVATE FULL BOAT CHARTER

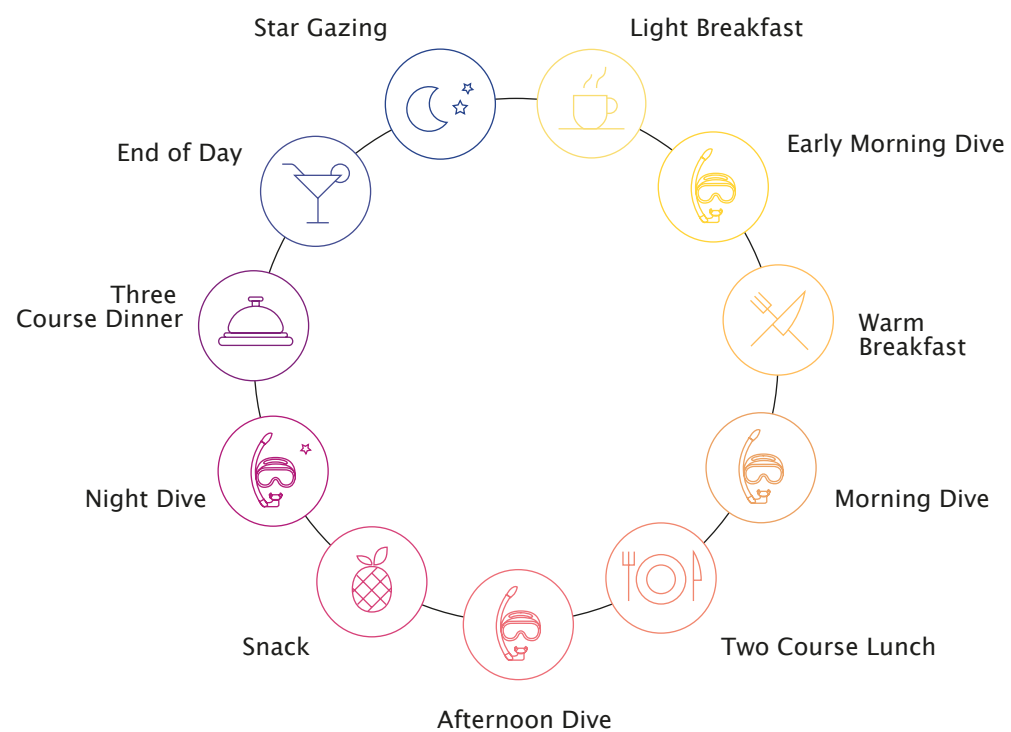
per Night 3990 € (min. 4 nights; up to 10 guests)

#### CHILDREN RATES

Available on request and individual basis



## A Typical Day aboard Moana



Please note that the arrival and departure days look different.









# Sample itinerary



Welcome to your holiday! We will pick you up from the airport or hotel in Labuan Bajo. After a welcome drink we will fit and check your equipment. Once all guests are on board we will set course towards the island of Sebayur Kecil. After lunch we will do our check dive where guests and guides can get used to each other. We will stay at Sebayur for the night.

Our first dive of today will be at Tatawa Besar, where you can expect a nice drift. After breakfast we will head towards the center of the park and visit Batu Bo-long, a dramatic formation that extends underwater and we are likely to see some sharks here. Our second lunch we will dive at Manta Point for a close encounter with those gentle giants. The night dive will be at Gila Lawa Darat, where we also stay for the night.

We will wake up early to make our way towards the northern most part of the National Park. Castle Rock is an underwater pinnacle and often subject to various currents. This is usually one of the highlights of the trip back south towards the center of the park. We will stop at Tatawa Kecil and Siaba Kecil. Both sides have a beautiful topography and lots of marine life. Expect some currents here as well. After those three dives we will continue south towards Rinca Island. Our night dive will be at Wainilu, where you can expect some amazing critters during the muck night dive.

Another exciting day today as we start today at the Golden Passage, another channel between Komodo and Gili Lawa Darat. After breakfast we'll head south towards the center of the park. We will stop at Tatawa Kecil and Siaba Kecil. Both sides have a beautiful topography and lots of marine life. Expect some currents here as well. After those three dives we will continue south towards Rinca Island. Our night dive will be at Wainilu, where you can expect some amazing critters during the muck night dive.

In the morning we will visit the ranger station on Rinca Island for a short trek to visit the famous Komodo dragons, the largest lizards on earth. Accompanied by a ranger, we have a chance to get close up with these prehistoric creatures. After breakfast we are planning at least 1 more dive (depending on your flight the next day) at Wainilu or Tengah Kecil. On the way back to Flores we will pass Kalong Island, where thousands of flying foxes (fruit bats) take off during sunset. A truly impressive event!

Depending on your flight back to Bali, we will sail to Labuan Bajo early morning for a planned check-out around 10 or 11 o'clock. Of course we will drop you off at the airport (or your hotel in Labuan Bajo). We guarantee you a fantastic time aboard Moana and look forward to welcoming you again!



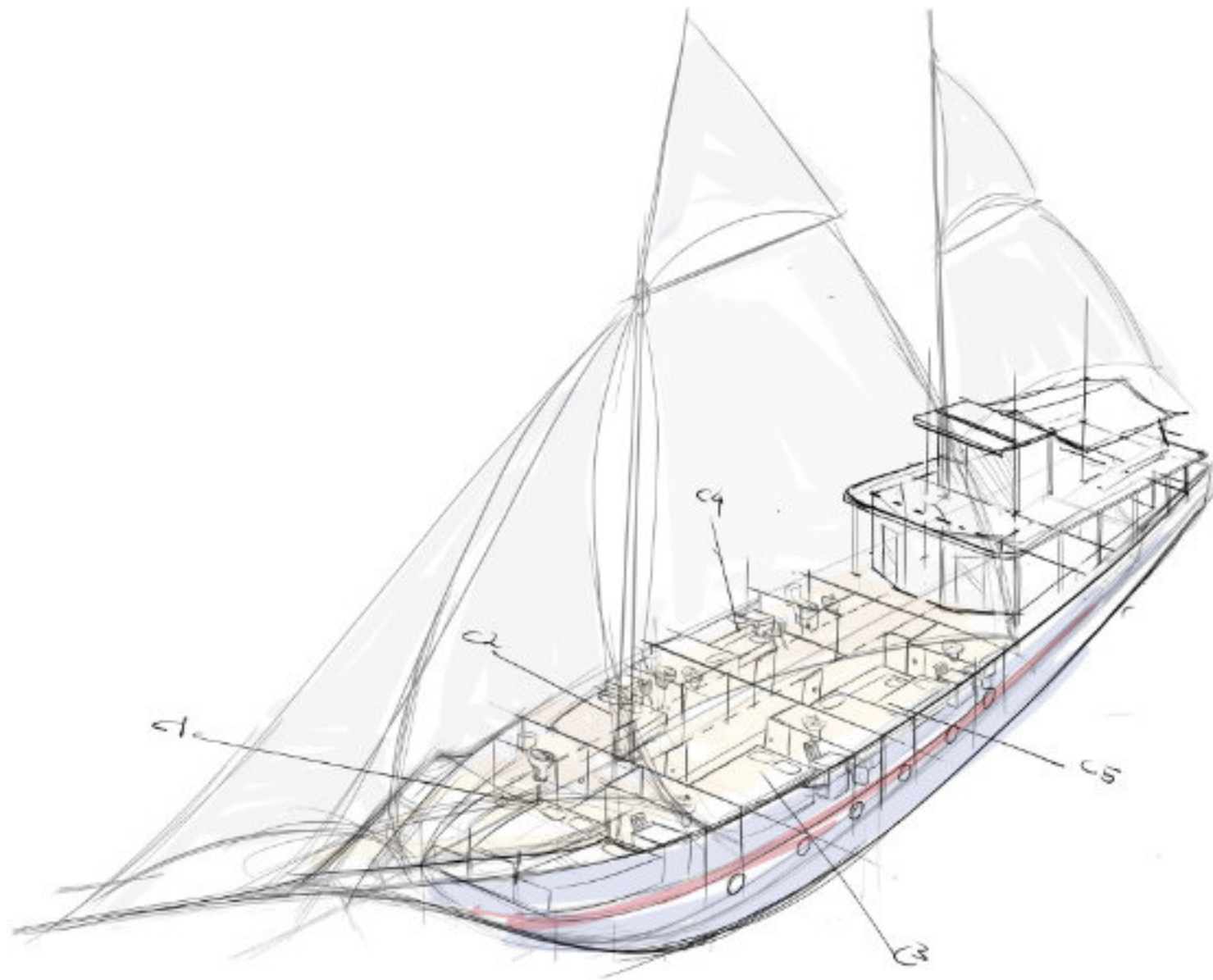
*Komodo*

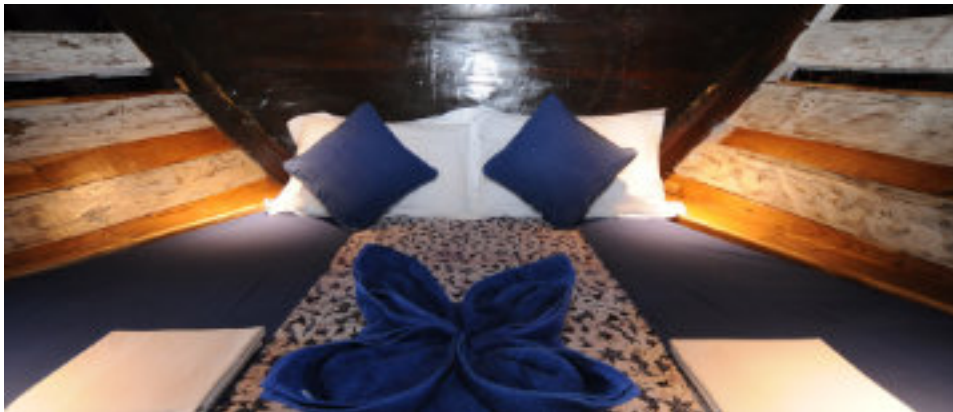
*Labuan Bajo*

*Flores*

*Rinca*







## Cabins

Moana has 5 comfortable cabins below deck. Each cabin features an ensuite bathroom, individually controlled air conditioning, storage space and warm lighting.

There are 3 double bed cabins and 2 twin bed cabins accommodating a maximum of 10 guests.

...and of course, you can sleep under the stars too.





# Equipment Rental 2024 /25

## DIVING EQUIPMENT

# 225 €

(full set / trip)

BCD / Jacket  
Regulator (w/ SPG, AAS, LPI)  
Wetsuit  
Dive Computer

**FREE** Pair of Boots, Pair of Fins,  
Mask & Snorkel

Extra: Dive light: 7€ per day  
or 25€ per Trip

## SNORKEL EQUIPEMENT

# FREE €

Pair of Boots  
Pair of Fins  
Mask & Snorkel

You are more than welcome to rent diving and snorkeling equipment from us.

During booking, please inform us about your needs. We would like to be prepared for your arrival, which saves both of us time.

### PAYMENT

Payment can be done at the end of the trip aboard Moana in cash. (Please see within chapter "Payments" for further details)

### DIVE COMPUTER

For safety reasons, we require every diver to use a diving computer. Please let us know in advance if you need to rent one. Should you need assistance in how to use it we are happy to show you!

### SURFACE MARKER BUOY

For safety reasons we require every diver to have at least one surface marker buoy with them. We are happy to give you one free of charge.

### REEF HOOK

For some dive sites it's good to have a reef hock. Again, you can get one free of charge and we can show you how to use it but overall it's a safety device and not considered general equipment.



# How to book

## BOOKING YOUR MOANA CRUISING TRIP IS SIMPLE



Simply send us an email to check availability.



Once you have all the information needed, tell us which trip you want to join.



We will then send you a booking confirmation, the invoice and your personal sharc login data.



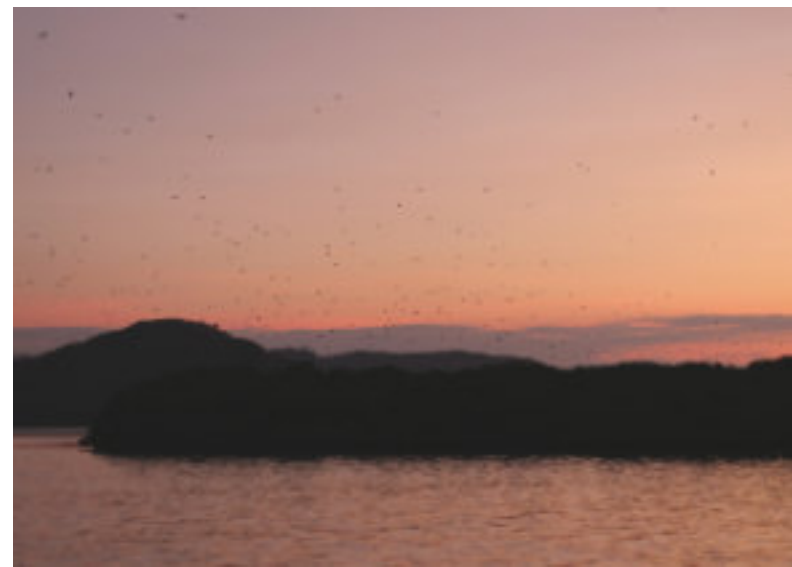
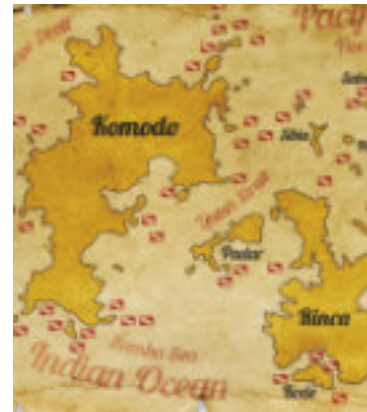
It's your turn to make the payment and provide personal details via sharc. We also recommend to organise important travel documents such as travel and diving insurance.



Your Moana Cruising Team will stay in touch with you until the trip starts and beyond.

# Komodo

Located within the coral triangle, the Komodo National Park is a true wonder of nature. A holiday aboard Moana gives you the opportunity to see the myriad of small tropical islands, the crystal clear waters of Komodo's many inlets and to experience the star of the show... the most biodiverse marine ecosystem on earth. A visit to Komodo with Moana Cruising is, quite simply, unforgettable.





# Dive Sites - Komodo National Park

Komodo National Park offers an enormous amount of dive sites. We would like to present to you a description of some of the best known signature dive sites of this area. We hope we can give you a taste of what it is to dive one of the world's best diving area and most diverse marine eco systems.

Please keep in mind that each and every dive is different. On one day the dive sites might be absolutely mind blowing, the next day the currents, sun light or weather conditions might not be in our favor. We will always try to get to the best spots. Trust us, we want to dive the best ourselves!

## CASTLE ROCK

Underwater pinnacle, located in the north of Komodo Island, can have some "reef hook" currents. Top is at 7m, nicely covered with table corals and small gorgonians, There is a hollow at about 15m where sometimes huge schools of mackerels, doctor fishes and jacks are gather, This underwater pinnacle attracts lots of pelagic fish; grey reef sharks, white tips, huge trevallies and the odd eagle ray passing by. Marine life is great at each depth, but it is at the base of the pinnacle where you will find the sharks cruising around. Experience in drift, reef hock, negative entry recommended.

## CRYSTAL ROCK

This dive site lies close to Castle Rock and is a bit easier to find, as the tip of the pinnacle just breaks the surface at low tide. Again can be prone to strong currents, there is an area

where you can easily descend and ascend with beautiful staghorn and table corals. Further down around 15 to 20m there is a small valley where a large group of yellow Oriental sweetlips and a pair of barramundi cods reside and then huge gorgonian sea fans around 30m.

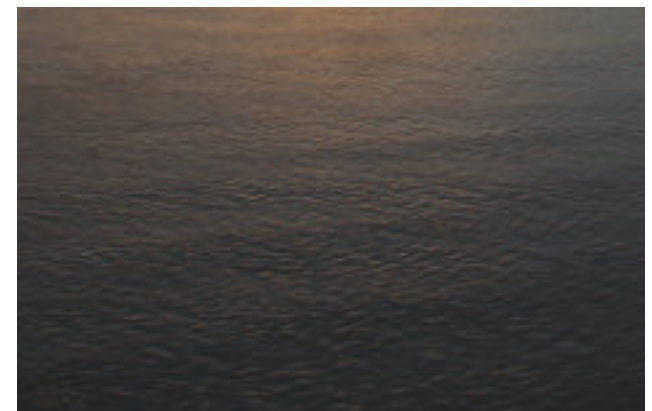
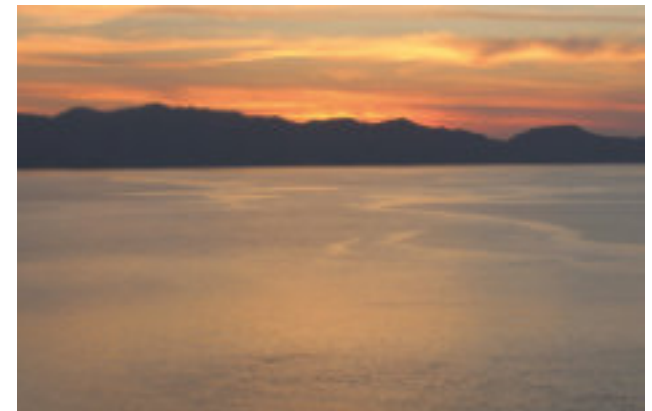
## CAULDRON

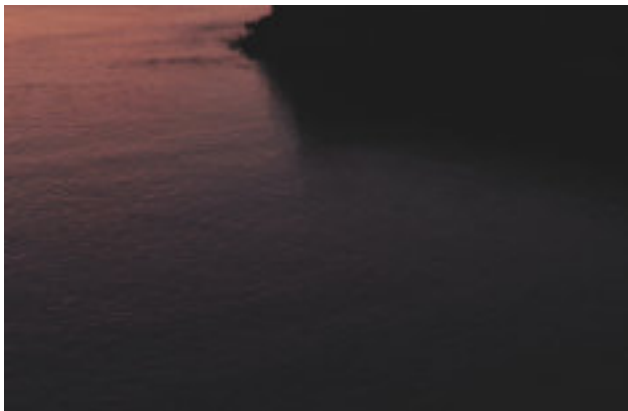
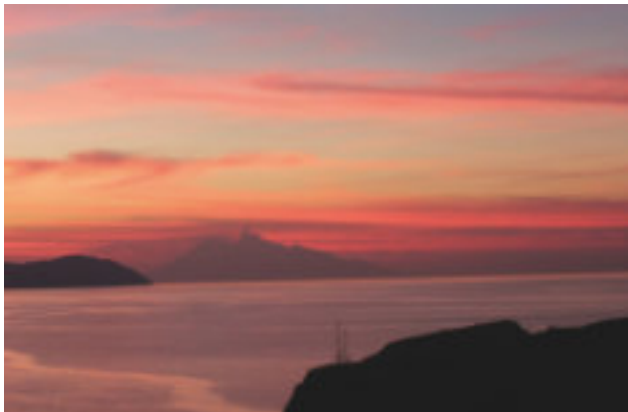
This passage between Gili Lawa Laut and Gili Lawa Darat on the northern tip of Komodo Island provides one of the most exhilarating and exciting dives in the park. This site takes you through passages, flying over rocky ridges and down into sandy bottom cauldrons with churning waters overhead before exiting from a beautiful reef in a sheltered back eddy to the north.

Regular sightings here include Reef Sharks, Giant Trevally, Manta, Turtle, schools of Midnight Snapper and Sweetlips. Best dived on a falling tide this site is not to be missed on any trip to Komodo.

## TATAWA BESAR

Starting at the northwestern tip of Tatawa is a good drift dive down the western side in about 15 to 20 meters of water. Fish life is plentiful and an endless field of stunning orange soft corals can be seen. Mantas are often seen in this area also. It is also possible to drift down the north coast of Tatawa from the same entry point.





### **TATAWA KECIL**

When currents are favourable diving can be good here, the best dives are down the western side of the island where rocks, caves and beautiful coral gardens in the shallows can be found. There is abundant fish life including large groupers, snappers, sweetlips, jacks, sharks and no shortage of anthias.

### **BATU BOLONG**

This small seamount sits right in the middle between Komodo and Tatawa Islands and therefore gets its fair share of water movement. The top of the rock sticks out of the water and you can either dive the northern or the southern side, depending on the current flow. This is one of the most exciting divesites in the area and once you go down, you are likely to be greeted by vast schools of reef fish, turtles and whitetip reefsharks. Look closely between the corals and rocks and you might find some nudibranchs like the beautiful Nembrotha Purpureolineata. This dive site is reserved for experienced divers only. As it is located in the deep channel, this can have quite strong currents.

### **WAINILU**

The best muck dive of Komodo, enter the water just in front of the beach at the west side of the bay, explore carefully the bottom at 8 to 15 meters, you will find a collections of critters that no other sites in Komodo can offer. This is a real paradise for macrophotographers.

Frog fish, sea horses, any species of pipe fish, dragonets, mandarin fish and so on. Wainilu is a strange and different dive site but not to be missed if you think that “small is nice”.

### **CANNIBAL ROCK**

An underwater mound in the well protected Loh Dasami Bay, between Rinca and Nusa Kode, which allows for easy diving with little current. Covered with soft corals, sponges and hard corals. On every available surface there are either feather stars, brittle stars, sea cucumbers or sea stars.

### **YELLOW WALL**

Just inside the southeastern corner of Loh Dasami Bay. It is also one of the best areas in Loh Dasami for snorkeling. The current usually flows south to north so the best entry point is just around the western-most tip of the headland; the dive should then continue into the bay along with the current.

### **TORPEDO ALLEY**

Torpedo Alley is in Horseshoe Bay not far from Cannibal Rock. The site is mainly a black sandy bottom scattered with many small critters. In addition to the rays that give the site its name, you can see Harlequin Ghost Pipefish and unusual nudibranchs like Armina semperi. The sandy bottom is lined with many colorful sea pens, and you can easily find small shrimps and other critters on them!

### **PINK BEACH**

Located on the eastern side of Komodo Island, this beach is known for macro photography subjects such as the Leaf scorpion fish, blue-ribbon eel, crocodile fish, and many species of nudibranch, a very good dive around a small area of reef around a steep rocky wall which is visible from the surface of the water at low tide. The dive site is a good place with clear water and is between 5 and 30m deep.



### 3 SISTERS

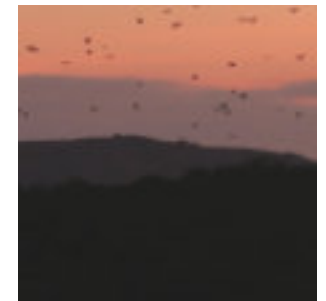
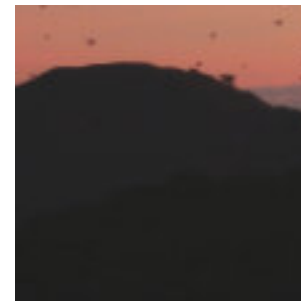
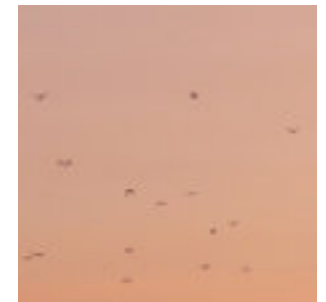
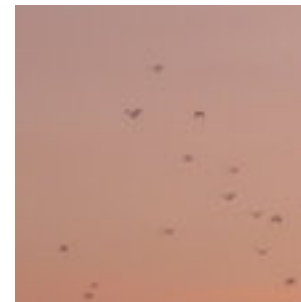
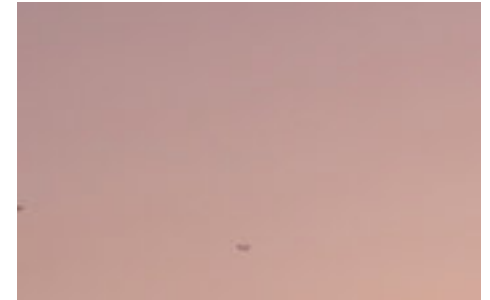
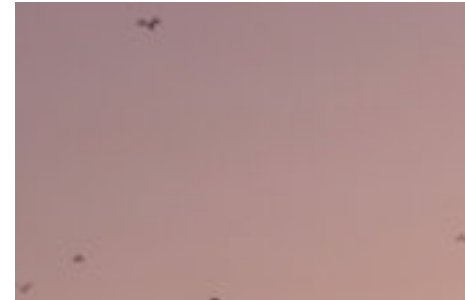
Located north of Pillaarsteen, there are three very large submerged rocks about 10m apart and within easy swimming distance of each other. The rocks run in a line about 100 meters east of a small reef that juts out on the eastern side of the island. The rocks sit on a sandy bottom in about 20–30 m of water and rise to 3–5m from the surface of the water. Around 30m are two smaller boulders that are especially nice, you dive in the shade of the current and finish the dive on the peaks which top at 6, 7 and 8 meters respectively.

### PILLAARSTEEN

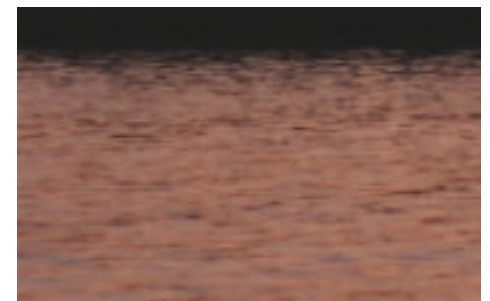
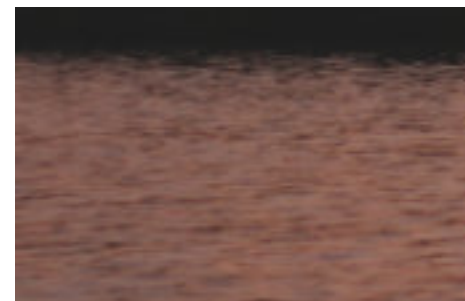
A tremendous dive site where the underwater topography includes huge boulders and rocks with nice cuts, swimthroughs, chimneys and canyons. There are some caves at about 40 and 16meter. Everything is beautifully covered with colorful soft corals, gorgonians, hydroids, sponges!

### MANTA ALLEY

South coast of Komodo Island, lying at 5 to 30 meters, a long gently sloping sandy reef flat, with a strong current that you drift with, This dive site is usually marked with sharks, large giant trevallies and beautiful coral. Aside from mantas, school of fusiliers, giant jack fishes are often present as well as the turtles, whitetip sharks and snappers.



**There are many  
more dive sites  
and some of  
them only we  
know of.  
Get ready for  
some breathta-  
king action!**







# Climate

As Komodo is roughly 8° south of the equator it has two season – dry and wet season.

Dry season is from April – October where the air temperature is more or less always 30° but there is a nice breeze, wind which makes it super comfortable in the day time. At night it will cool down a bit and feels like 25°. A light long sleeve or shirt can be useful aboard Moana.

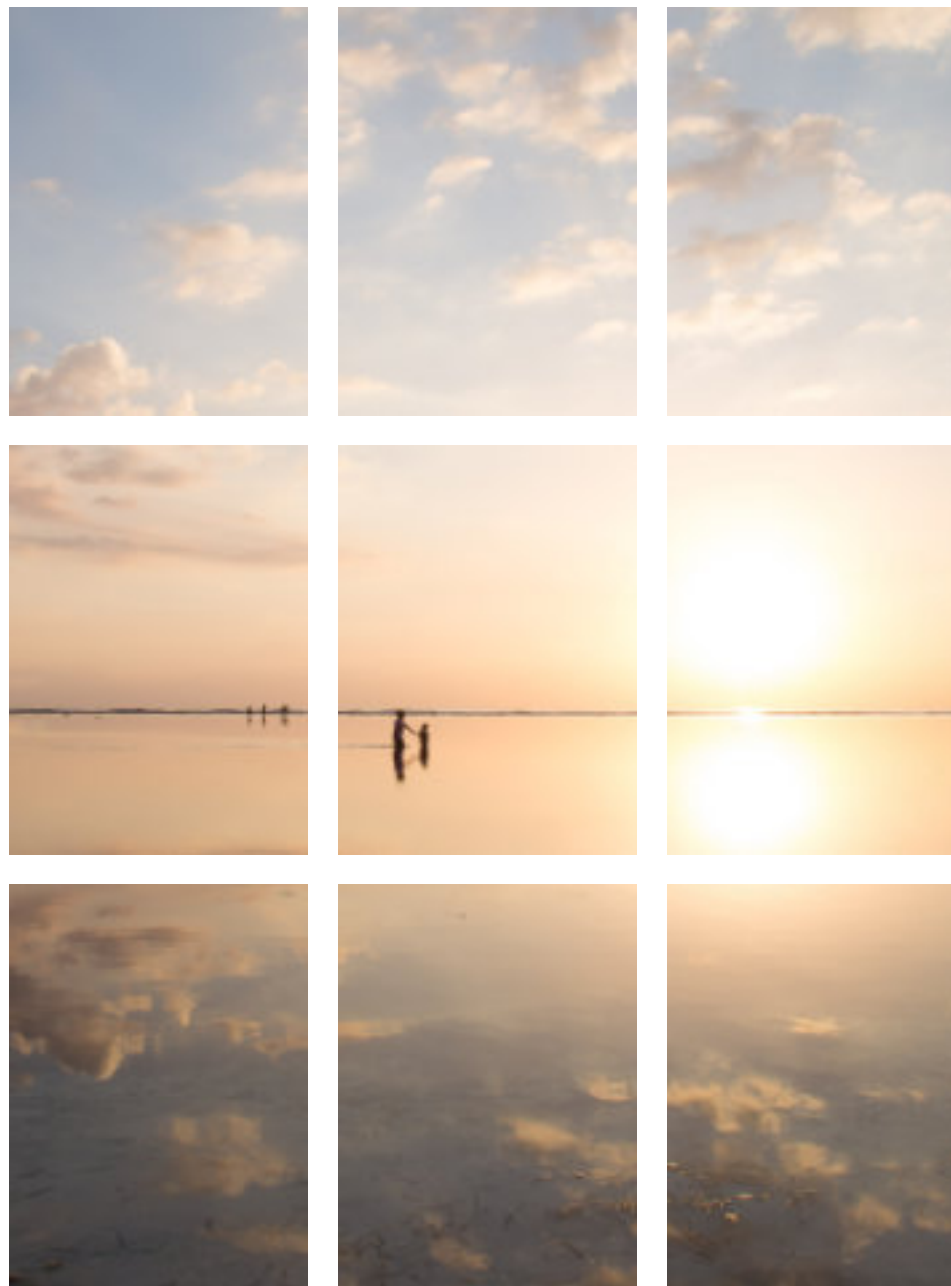
Wet season is then from November – March with basically 30° in the daytime but no wind which makes it feel hot and humid. At night it doesn't cool as much and still feels very warm.

As the name suggests there is rain although this ranges from heavy short bursts during one day or the other to rain for a couple of days. From experience January and February are peak months for rain. November, December and March have still great days although the chance of rain are higher.

Both seasons have their appeal to them. During the wet months we experience hardly any other liveaboards in Komodo.

Water temperature is 25–29°. Sometimes you get cooler thermoclines.

Oh, and there are magical starry nights – with an breathtaking view of the milky way! You got to see that!





# Private Charter

If you are planning to travel with a group of friends, your family or as travel agent, chartering Moana is a great option to get everybody aboard and create an individual holiday program.

## **WHAT IS A PRIVATE FULL CHARTER?**

A full charter is simply the option to fully book the entire boat. A minimum stay of 4 nights is mandatory and is subject to availability depending on our regular scheduled trips.

## **WHAT IS THE BENEFIT OF A CHARTER?**

Spend time with your closest friends or family aboard a beautiful liveaboard and experience relaxed atmosphere while cruising and diving in style. You will not have to share

any cabins or deck with people you don't know. We will tailor make your holiday and cruising program to your special wishes. You can more or less let us know where you want to go and how long you want to spend time aboard.

## **WHEN SHOULD I CHARTER MOANA?**

There are hundreds of occasions you can think of. Basically, whenever you want to spend quality time with your friends and family, and especially on events such as birthdays, honeymoon, family holidays or after your university degree to celebrate.

Furthermore, chartering Moana as incentive for your best employees and their families is a great idea.



# Komodo National Park

Komodo is one of our favourite dive locations in Indonesia, offering a plethora of exciting, challenging and rewarding dive sites, and presenting a spectacle of underwater topography, teaming with marine life. Above the water you drift slowly through scattered islands, white sandy beaches, and blue, blue water.

It is a place of dazzling coral reefs, spectacular marine life, fierce dragons and smoking volcanoes, a real life “Jurassic Park” above and below the surface of the seas.

One of the last frontiers of the underwater world and a guaranteed dive adventure of a lifetime.

Komodo National park is located in the centre of the Indonesian archipelago, between the islands of Sumbawa and Flores. Established in 1980, initially the main purpose of the Park was to conserve the unique Komodo dragon (*Varanus komodoensis*) and its habitat. However, over the years, the goals for the Park have expanded to protecting its entire biodiversity, both terrestrial and marine. In 1986, the Park was declared a World Heritage Site and a Man and Biosphere Reserve by UNESCO, both indications of the Park’s biological importance.

The park covers more than 1,800 km<sup>2</sup> of which about a third is land area. The biggest islands are Komodo and Rinca that are about 35 km and 25 km across respectively.

Next to these there are numerous smaller islands. As well as being home to the Komodo dragon, the Park provides refuge for many other notable terrestrial species such as the orange-footed scrub fowl, an endemic rat, and the Timor deer. The rugged hillsides of dry grassy savannah and only a few patches of green vegetation contrast strongly with the white sandy beaches and the blue waters surging over colourful fish-rich coral reefs.

Moreover, the Park includes one of the richest marine environments including coral reefs, mangroves, seagrass beds, seamounts, and semi-enclosed bays. These habitats harbour more than 1,000 species of fish, some 260 species of reef-building coral, and 70 species of sponges.

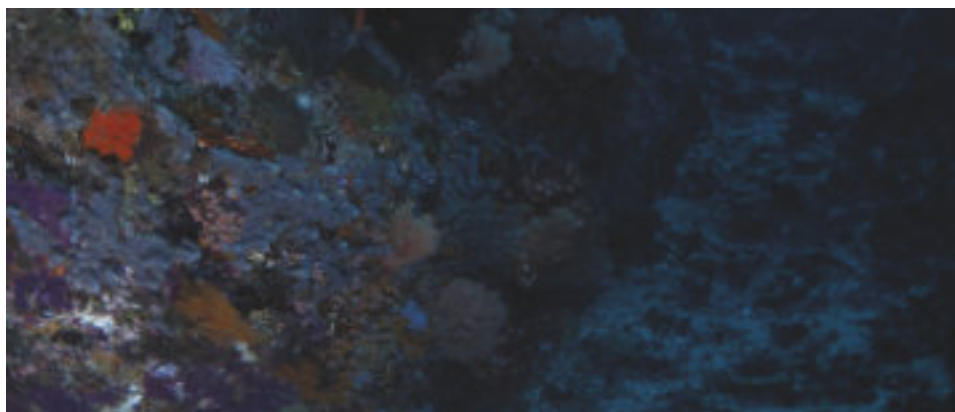
Dugong, sharks, manta rays, at least 14 species of whales, dolphins, and sea turtles also make Komodo National Park their home.

Most divers will know Komodo as an area with very strong tidal currents. These currents are exiting and good fun for advanced divers, but might make others feel less comfortable.

Dive sites vary from gentle coral slopes to sheer cliff walls, channels, flat bottoms, pinnacles, caves, swim-throughs and a large group of hard and soft corals.

Come now, visit  
and cruise the  
last jurassic park  
on earth!





## What to bring?

### USEFUL PACKING TIPS:

- ✓ Pack simple: Less is more and most of the time you will wear your swim wear.
- ✓ Aboard Moana we will provide towels and linen. No need to bring your own.
- ✓ Sunscreen, sunglasses and a hat/cap. It can get hot!
- ✓ Mosquito repellent (only for dragon walk). Don't worry, we have almost no mosquito while we are at sea.
- ✓ A jumper or beanie for after your night dive.
- ✓ International drivers license, if you're planning on exploring the islands by car or scooter.
- ✓ Copies of your passport, travel insurance, credit card, and other important documents.
- ✓ First-Aid Kit





Max. 10 guests per trip  
5 meals per day



# Medical Info

## VACCINE PROTECTION

Concerning trips to Indonesia the (German) Federal Foreign Office expressly recommends to check the standard vaccinations and to let postinoculate if necessary (tetanus, Diphtherie, whooping cough, polio, mumps, measles, German measles, Influenza and particularly for Indonesia hepatitis A). With longer stays the vaccinations are recommended against hepatitis B, great fury, typhoid and Japanese encephalitis (Also on Bali there piled up fury infections during the last years).

## DENGUE FEVER

Dengue fever is a viral disease which can be contracted of the diurnal Aedes mosquito. In Indonesia the Dengue fever appears piled up – the only precaution is to be well protected against mosquitos by putting some mosquito lotion on uncovered skin, also during the day.

## MALARIA

Malaria is contracted of the nocturnal Anopheles mosquito. With appearance of fever a doctor should be visited – also here the precaution requires mosquito protection during the night. In addition, a malaria prophylaxis can be taken in the form of tablets. On Bali malaria does not appear and on Moana there are virtually no mosquitoes – during our experience it has still not come to any case of illness. This has to be understood as an experience value, not as an official guideline.

## HYPERBARIC CHAMBER

There is no hyperbaric chamber near by Komodo. Only in Bali and you will need to go there by plane which obviously doesn't work with DCS. YOU MUST DIVE CONSERVATIVELY!

## A WORD FROM SOME LOCAL TRAVEL AGENTS

We cannot say if you should get vaccinations or not. This is up to you. Above we wanted to present you the official version of the government agencies. Have a look at some comments by locals here but you cannot hold us responsible for anything.

“Generally speaking I haven't heard of any case of malaria. Of course theoretically it could happen but for 4,5 years since I am in Bali, Flores we never heard anything about that. In Bali Dengue Fever is a bit more likely.”

“Most of the time our guests did not take any precaution and never thought of any problems.”

“We can't say don't get any vaccinations. From our experience you would not need it though. It's up to you.”

## DISCLAIMER

Please note that we simply compiled this list for your information. We do not intend to give you a comprehensive list. Refer to your embassy or official places and medial professional for all details if necessary.





A large manta ray is swimming in clear, turquoise water. The ray's dark, flat body is visible, with its long, thin pectoral fins extending outwards. The water is bright and clear, showing some sandy or rocky bottom in the lower part of the frame.

# Visa & Travel Info

With the following information it concerns directives. The entry conditions can change at short notice; legally binding or additional information are to be asked at the embassy of the respective destination.

## CONDITIONS OF ENTRY

A valid passport is sufficient to travel to Indonesia. Even with a preliminary passport it is possible, though a visa must be applied already before. Children are allowed to enter with a child passport. Note that the travel documents have to be valid at least six month after entry.

## VISA

Tourists, who do not plan to work in Indonesia, can get a Visa on Arrival. The VOA can be paid at the airport in cash (USD, EUR, AUD or IDR) or by credit card. The VOA is valid for 30 days and costs 35 USD/EUR. It's extendable for another 30 days.

## AIRPORT TAX

There is no airport tax in Bali for leaving the country.

## INTERNATIONAL AIR TRAFFIC

A wide range of airlines are flying from Europe to Indonesia. Flights from Amsterdam are popular, as there exist direct flights to Indonesia. Also very popular are flights via Singapore or Kuala Lumpur. Main port of entry to get to Moana is first to Bali (Airport from Denpasar DPS).

## COVID:

Find good up to date infos here: [Bali.com](https://www.bali.com)

## DISCLAIMER

Please note that we simply compiled this list for your information. We do not intend to give you a comprehensive list. Refer to your embassy or official places for all details if necessary.

# Getting to and from Moana



## EMBARKATION

Our main service starts with the pick up from the Komodo airport or a hotel in Labuhan Bajo (LBJ), Flores by one of our staff members. The ride to Moana takes about 15 min.

If you are staying in Labuan Bajo before the trip, we will inform the hotel one day prior to Moana's departure about your exact pick up time. Usually it is around 9:30-10.00am.



## DISEMBARKATION

In the morning of the last day we are cruising back to Labuan Bajo harbour. We plan to arrive there by 9:30 - 10:00. On the way you can enjoy our warm breakfast and organise your personal baggage.

Once we arrived in the harbour, we will bring you to the airport or your hotel free of charge. Airport transfer is about 2 hours before your flight departures - usually for most of our guests at 11:00 am.

If you have an afternoon flight, we can arrange a meeting point in Labuan Bajo where we will bring your baggage to and pick you up by car to the airport.





# Flight Information (as of March 2023)

The Komodo National Park lies in the province of East Nusa Tenggara, west off the island of Flores in Indonesia. The easiest way to get there from Bali is by plane. The airport is in the harbour village of Labuan Bajo (LBJ). It is about 1,5h flight away from Bali (DPS). If you need support with your flight booking – just let us know.

## ARRIVAL

Please make sure to arrive at LBJ on the trip departure day by **11:00 am**. Late arrival might cause extra costs for speed-boat transfers.

Recommended flights: Batik Air, Wings Air or Garuda Airlines leaving Bali early in the morning at around 8:00 am or stay one night before in Labuan Bajo.

## DEPARTURE

The trip ends at 11:00 am after a great breakfast aboard. We offer you a free transfer either to the airport or a hotel in Labuan Bajo included in our services. For more details please see Disembarkation.

Recommended flights: Batik Air, Wings Air or Garuda Airlines leaving Labuan Bajo at around 13:00pm.

## BAGGAGE ALLOWANCE

The general included baggage allowance is 20 kg / person with a small bag as carry-on luggage. Additional baggage can be paid for as starting from 155.000 IDR (~ 10EUR). We do advise you to pack light and only take essentials with you.

## DIVING EQUIPMENT

It is important to keep in mind, that sports equipment will be handled as second priority luggage. In case the small airplanes are full, the second priority equipment will be the first to be offloaded and send on the next airplane. It doesn't happen a lot, but in high season we sometimes have these situations.

Although we try we cannot always wait for the delayed luggage to arrive aboard Moana. Then you might need to rent equipment from us.



# Additional Service

## DIVE AND TRAVEL INSURANCE

We highly recommend that you organise a dive & travel insurance as well as a cancelation insurance for you.

We are working together with DAN (Divers Alert Network) to support you with the diving and travel health insurance part. Let us know in advance if you want us to book an insurance for you.

## ACCOMMODATION

An ideal plan is also to stay one night before the trip in Labuan Bajo. We are happy to help arrange a hotel, too. This way you might arrive more relaxed and enjoy the first day completely.

## TRANSFERS

We can also arrange other hotels, transfers and activities in Bali for you. Simply speak to us about your holiday plans.

## ACTIVITIES

Some of our guests also enjoyed following activities in Bali:

- Yoga
- Surfing
- Diving
- Wakeboarding





# Payment

## ONBOARD PAYMENTS

Your on board bill can be paid in several ways.

### CASH

You are more than welcome to pay with EURO, USD or (ideally) Indonesian Rupiah IDR. Our Cruise Director will use an exchange rate given by accounting.

### TIP

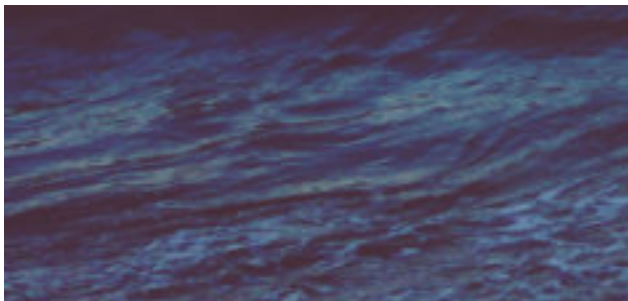
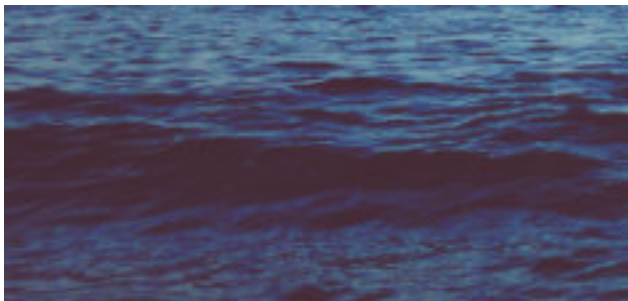
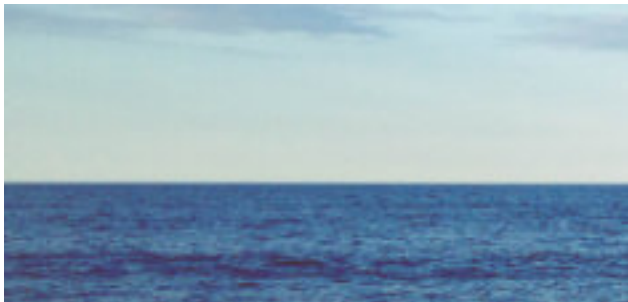
Within the liveaboard industry its common to tip the crew if you are satisfied with their service. We suggest a tip of 30 Euro per guest and night, which is equal to a tip of 3 EUR per crew member per night. Tips are shared equally between the Indonesian crew members. Ideally you have the tip in cash in IDR with you as our Cruise Director will hand out the tip to the crew directly at the end of the trip.

### ATM

There is an ATM in Labuan Bajo, Flores. We would kindly ask you to make sure you have enough cash with you before departure. Please inform our driver, cruise director at pick up that you will need to go to the ATM.

## TRIP PAYMENT

Once you've sent us an email stating that you want to book your trip, we will guide you through the next steps. You will receive an invoice with details about your deposit payment which is usually 20% of the trip price. The remaining balance needs to be paid at least 60 days before the trip starts. We have a Euro account with a major bank in Germany and an IDR account in Bali. PayPal can be an option as well although you need to cover the (high) fees from them.







We are using the online booking system sharc.

sharc allows you to very easily:

- Check your bookings
- Update your personal data
- Inform us about special food preferences and medical information
- Share your diving interests
- Send us further info regarding your travel plans
- and much more

Once we have received your deposit of your trip booking we will send you your personal login details. Sharc is secured by the latest internet technologies and adding data is safer and faster than sending an email.

# Cancellation

## INDIVIDUAL BOOKINGS

- If you or your clients have to cancel the booking the following charges apply

more than 60 days before departure 20% of the total amount (that means downpayment is basically not refundable)

60 – 31 days before departure 60% of the total amount

30 – 0 days before departure or no showing up 100% of the total amount

- Any banking fees occurring due to refund from the company to the guest or agent need to be covered by the guest or agent

## CHARTER BOOKINGS

- The following fees apply for cancellation of full charters:

more than 120 days before departure 30% of the total amount (that means downpayment is basically not refundable)

120 – 91 days prior to departure date 70% of the total amount

90 – 0 days before departure or no showing up 100% of the total amount

- Any banking fees occurring due to refund from the company to the guest or agent need to be covered by the guest or agent
- Any banking fees occurring due to refund from the company to the guest or agent need to be covered by the guest or agent
- from the company to the guest or agent need to be covered by the guest or agent

## ADD-ON BOOKINGS

- Cancellations of flights, hotels and transfers (and other bookings with a third party entity) will be decided case by case and needs to be seen what refund we will get from the third party itself.
- The date of cancellation is defined as the time the written cancellation is received at PT. Aman Samudera Bali (Moana Cruising). If the guests fails to appear at departure time because he is unwilling to travel or when prevented from doing so by misadventure, a 100% cancellation fee has to be paid.
- In the event that the trip has to be changed by PT. Aman Samudera Bali, the guest is entitled to withdraw his booking at no cost to himself. PT. Aman Samudera Bali is required to inform you immediately of any changes to booking as well as of your choice to either withdraw from the trip or accept the change.

| > 60 DAYS                | 60 – 31 DAYS             | 30 – 0 DAYS               |
|--------------------------|--------------------------|---------------------------|
| 20 % of trip total price | 60 % of trip total price | 100 % of trip total price |

| > 120 DAYS               | 120 – 91 DAYS            | 90 – 0 DAYS               |
|--------------------------|--------------------------|---------------------------|
| 30 % of trip total price | 70 % of trip total price | 100 % of trip total price |







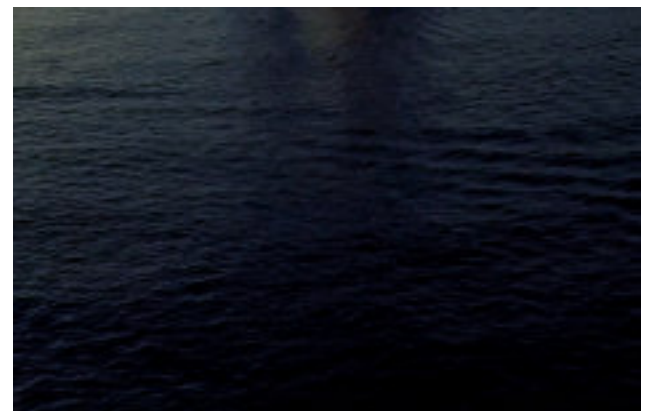
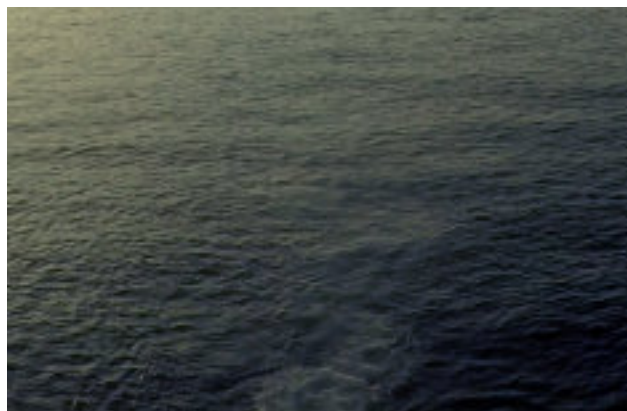
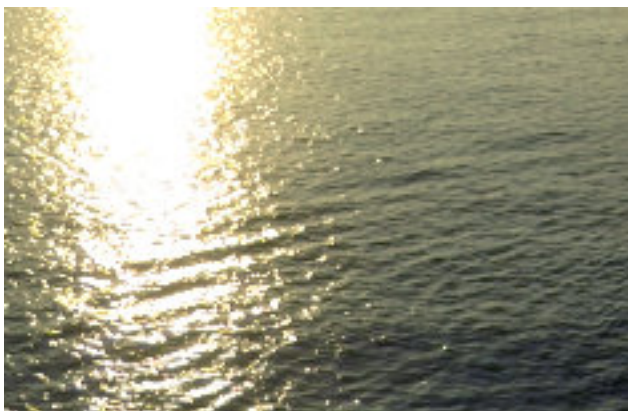
\*\*\*\*

---

**Thank you to the  
whole crew for making  
this trip so special and  
unforgettable.**

---

Jeremie, France



# Terms & Conditions

Thank you very much for your booking with Moana Cruising. We want you to experience the best cruising or diving holiday in Indonesia. To avoid future confusion we would like to show you our Terms & Conditions (incl. booking and cancelation policies). We kindly ask you to read this carefully. Once you have paid your deposit (directly to us or via your travel agent) you agree to the following.

## BOOKING CONFIRMATION

Individual bookings are not confirmed until an advance payment of 20% of the trip price (see details on your invoice) has been paid. The remainder of the payment has to be paid 60 days before cruise departure

Full charter bookings are not confirmed until an advance payment of 30% of the trip (see details on your invoice) has been paid. The remainder of the payment has to be paid 120 days before cruise departure.

Add-on bookings of flights, hotels and transfers (and other bookings with a third party entity) will need to be paid in full at the time of booking.

Delinquent payments can cause a booking cancelation. By forwarding the deposit for passage, the client certifies that he/she does not have a physical condition that would create a hazard to him/herself and/or other passengers and agrees to these terms & conditions.

After booking confirmation, the agent or guest will receive a log-in to our booking application Sharc. We require all guests to fill in all guest details. Failure to do so, or provi-

ding incomplete data, might result in delayed pickups, delayed departure, unavailability of rental equipment, etc.

## TRAVEL DOCUMENTS

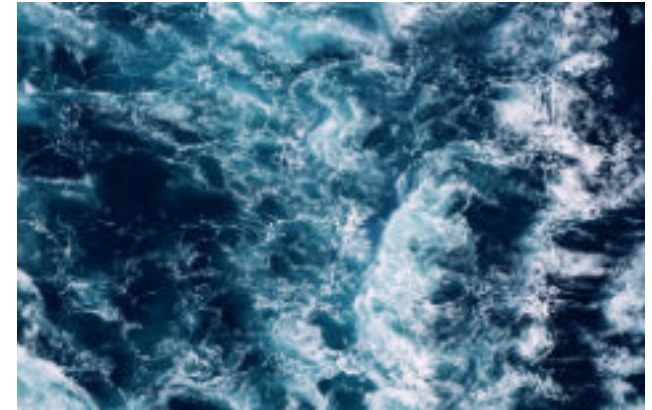
You need to have a passport that is valid for 6 months after the date of entering Indonesia.

You are required to check whether you need a visa to enter Indonesia. PT. Aman Samudera Bali (trading as Moana Cruising) is not, may not and cannot be held liable or responsible for missing the scheduled departure of the booked trip due to visa problems.

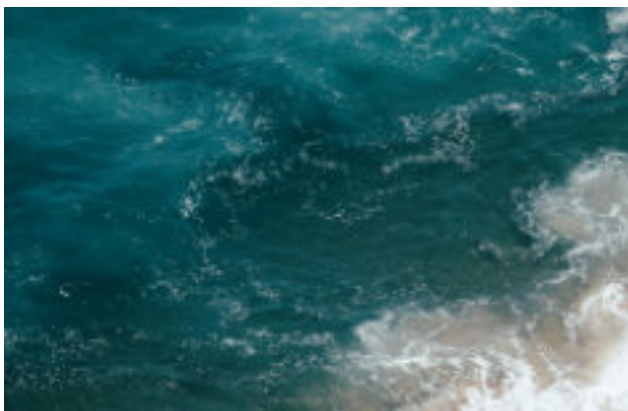
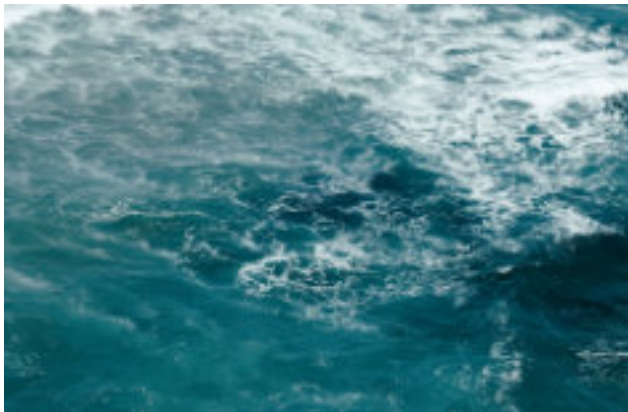
## LIABILITY

PT. Aman Samudera Bali may not be held liable or responsible in any way for any occurrence on this cruise/dive trip which may result in personal injury, property damage, wrongful death or other damage to you or your family, heirs, or assigns that may occur as a result of the participation in this boat trip and scuba dive(s) and excludes liability for matters such as baggage loss or damage, expense or inconvenience caused by delayed or cancelled transportation service, flight delays or cancellations, change of schedule, strikes or other conditions beyond PT. Aman Samudera Bali's control.

The diving organizer is obliged to exercise due care and diligence as required in the normal course of doing business. We undertake, therefore, to provide the services of the diving package with the assured quality and without impairments. No liability is assumed for items, which normally are not taken along in luggage. The diving organizer is not liable







for unsatisfactory services provided by third parties which the diving organizer merely facilitates on behalf of its diving customers (e.g., excursions, tours). Every diving participant participates in the diving trip and any connected activities at his own risk and is individually and wholly responsible for his own person. He has to take the required safety precautions in particular situations, e.g., securing his person below deck and on deck, in the water and on land, putting on lifebelts or life jackets. The diving trip participant declares, furthermore, that he will forego (waive) any liability claim and any claims for compensation for damages to life, limb and property against the diving trip organizer and his employees as well as other participants on the diving trip except in cases of intentional misconduct or gross negligence. This also applies to damages due to participation in the diving trip as well as to all risks connected with compressed air diving. For compressed air diving you require certification or the badge, of a recognized diving organization, such as PADI. It is in your own interest to be sufficiently qualified and able to show your certification at all diving activities. All duties and rights of the ship's owner, diving teacher and crew are not affected by this agreement. In the event that a dive is not advisable or dangerous to the health and the life of the diving participants or in case of danger for the ship or crew on account of bad weather, dangerous seas, acts of God, a political incident and events over which PT Aman Samudera Bali has no influence, the ship's owner, the captain as well as the diving instructor may delay or cancel a diving trip on his own discretion. This applies as well during the course of a diving trip. In such an emergency all diving participants must abide by the decision of the ship's owner, diving instructor or the captain and to follow their orders. Furthermore, during a dive and during all other activities pursued on a diving trip, any and all instructions of the diving guide and his assistants must be

carried out. In the event that a participant fails to abide by such instructions, the diving guide may exclude such participant from the dive or activity. It is generally forbidden to dive alone. The participants in a dive must always stay together, dive and surface together and part again from their diving partners on returning to the starting point (beach, boat, etc.) only. This applies to assign diving partners as well. The participants agree to observe all diving rules and security standards. Participants must honour the maximum diving depth permitted by diving certification or the relevant national legal regulations. The maximum depth may not, however, under any circumstances exceed 30 meters. Any violation will lead to the exclusion from the dive and in case of recurrence of such a violation from the diving trip, without the right to reclaim the travel expenses or any part thereof. The diving organizer assumes no liability in case of theft, damage or loss of diving equipment or any other personal property. The diving participant, however, is liable for any damage to or loss of equipment that has been provided. The diving participant agrees to ascertain before every dive the proper functioning of any equipment he will use. The diving participant acknowledges that he received the provided equipment in the good condition and working order and agrees to return it in functioning order. To pursue or harpoon fish or other creatures in or under water during a dive is forbidden. Violators will be excluded from further dives.

Each participant is required to sign a Liability Release and Assumption of Risk Agreement before the trip.

#### **INSURANCES**

It is essential to arrange a comprehensive personal, diving, baggage and travel insurance to cover any eventuality, including charges arising should you have to cancel your holiday plans.

Moana Cruising can arrange a short term diving insurance via DAN Asia Pacific. Please approach us for this option.

Please check your agent or your own insurance company about your full coverage.

### ITINERARIES

Sailing itineraries and daily programs are subject to change due to weather and sea conditions, availability of safe anchorage, government regulations and other factors. Every effort will be made to carry out the program as planned.

Program changes may take place during the cruise to take advantage of local cultural events, to adapt to sailing conditions, or in response to other factors.

In the unlikely event of an accident during the cruise and the program has to be changed the guests are entitled to compensation of the portion of the cruise which could not been carried out. Accidents can happen and this does not entitle the guest to get compensation per se. The company will take immediate actions during the event of an accident to ease the situation. A thorough review will clarify more afterwards.

### PASSENGERS

The maximum number of guests aboard is 10. The maximum number of divers is 10. The minimum of guests to guarantee any cruise is 4 passengers.

If any of these cruises are withdrawn prior to departure date PT. Aman Samudera Bali's liability is limited to a refund of monies received at time of cancellation (maximum 6 weeks before departure).

### CANCELLATION

#### INDIVIDUAL BOOKINGS

If you or your clients have to cancel the booking the following charges apply

more than 60 days before departure 20% of the total amount (that means downpayment is basically not refundable)

60 – 31 days before departure 60% of the total amount

30 – 0 days before departure or no showing up 100% of the total amount

Any banking fees occurring due to refund from the company to the guest or agent need to be covered by the guest or agent

#### CHARTER BOOKINGS

The following fees apply for cancelation of full charters:

more than 120 days before departure 30% of the total amount (that means downpayment is basically not refundable)

120 – 91 days prior to departure date 70% of the total amount

90 – 0 days before departure or no showing up 100% of the total amount

Any banking fees occurring due to refund from the company to the guest or agent need to be covered by the guest or agent

#### ADD-ON BOOKINGS

Cancellations of flights, hotels and transfers (and other bookings with a third party entity) will be decided case by case and needs to be seen what refund we will get from the third party itself.

The date of cancellation is defined as the time the written cancelation is received at PT. Aman Samudera Bali (Moana Cruising). If the guests fails to appear at departure time because he is unwilling to travel or when prevented from doing so by misadventure, a 100% cancellation fee has to be paid.

In the event that the trip has to be changed by PT. Aman Samudera Bali, the guest is entitled to withdraw his booking at no cost to himself. PT. Aman Samudera Bali is required to inform you immediately of any changes to booking as well as of your choice to either withdraw from the trip or accept the change.

### PRICES

Prices are quoted in Euro per person.

See the published documentations, emails and websites from PT. Aman Samudera Bali for inclusions and exclusions.

Onboard payments may be made in other currencies such as US Dollar, Euro and Indonesian Rupiah. Our Staff shall use the exchange rate from that day. Monetary change might not be available in the currency you paid. Our staff onboard holds the right to use the currency he seems mostly feasible. Credit card payments are possible, depending on internet connection.

Prices for third party bookings (such as flights) may be changed to Euro by the company. In this case the actual price may be affected by the exchange rate. Differences (due to the "weak" exchange rate from IDR to Euro) might need to be additionally covered by the guests and/or travel agent upon request by the company. The company must inform the guest and/or agent in advance of such changes and additional fees.



**NATIONAL PARK, HARBOR FEES & FUEL SURCHARGES**

Please be aware that the national park and harbor fees can be changed by the local government, harbor officials or national park authorities without any advance notice prior to your trip.

We did our best to calculate accurate rates for a cruise day but in case that the price of oil is going through the roof beyond the control of PT. Aman Samudera Bali (Moana Cruising) we need to charge you extra to guarantee the departure of the trip. The fuel surcharge is payable on board. PT. Aman Samudera is required to inform you in advance.

**HARBOUR CLEARANCE & AUTHORITIES**

Please be aware that the PT. Aman Samudera Bali (Moana Cruising) is not, may not and cannot be held liable or responsible for any delay in the departure. This is subject to local harbor protocols and police authorities. PT. Aman Samudera Bali will always comply with the law enforcement authorities and try its utmost and everything in its power to have a smooth scheduled trip.

**MEDIA RELEASE**

As guest I assign all rights to the film, videotape, digital media, photography, sound recording and printed quotes thereof made of me during my cruise aboard Moana by representatives of PT. Aman Samudera Bali (Moana Cruising) or their designee.

I hereby authorize the reproduction, copyright, exhibition, and/or distribution of said materials worldwide without limitation for any purpose.

PT. Aman Samudera Bali (Moana Cruising), or their designee, may use my name, likeness, voice, biographical infor-

mation and material supplied by me for purposes of advertising, publicity and sales promotion.

No money shall be due me for such use, now or in the future, however PT. Aman Samudera Bali (Moana Cruising) will commit to tell me the use in advance and will offer something in return such as future discounts, merchandising or others.

While supplies last and the decision is final.

**JURISDICTION**

Bali, Indonesia

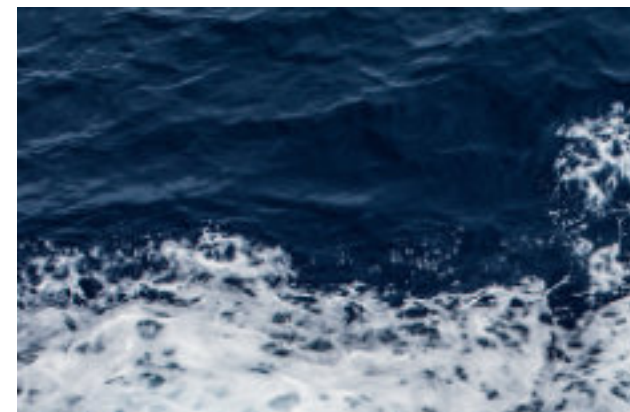
**EXCLUSION OF CLAIMS**

Each diving participant must report any shortcomings immediately to the captain on board of the diving ship. Every diving customer must, furthermore, deposit any claims on account of non-performance or performance not in keeping with the terms of the contract of any diving services in writing within a month after completion of the diving trip.

**DEFAULTS**

The ineffectiveness of particular terms of the booking contract does not invalidate the whole contract. We reserve the right to correct mistakes as well as print and calculation errors. Verbal agreements are effective only with our written confirmation.

All written documentation from PT. Aman Samudera Bali such as, but not limited to, emails, guest info sheets or other booking info sheets are used to inform you of the legal contract conditions you agreed to with your booking.





\*\*\*\*\*

**Experience memories of a  
lifetime!**

\*\*\*\*\*

